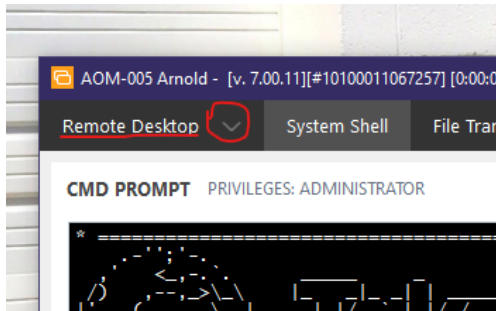
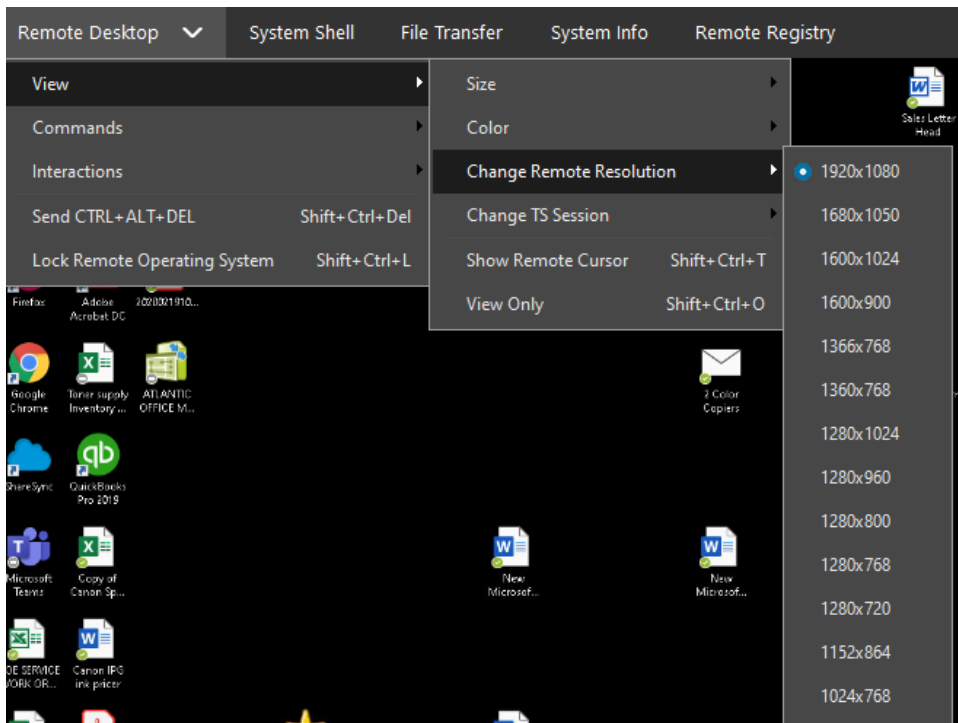


## To change the resolution on the remote PC:

On the top left of the remote connection window click the arrow next to “Remote Desktop”

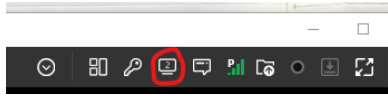


Select “View” > “Change Remote Resolution” and try different settings until the screen looks good to you.

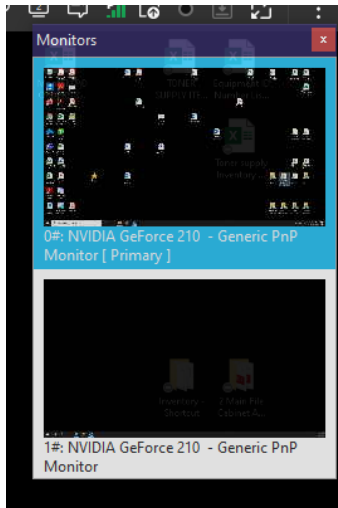


## To select from multiple monitors on the host PC:

Click the monitor icon on the top right of the remote connection window:

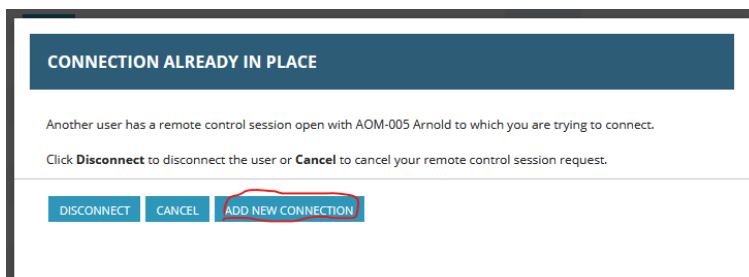
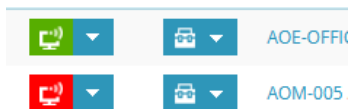


This will open a “monitor view” windows where you can select which screen you would like to view.



To open multiple screens at once, you will need to open a new connection to your remote host.

Go back to the remote connection portal. ([ncp.teamaom.com](http://ncp.teamaom.com)) Your remote control icon will turn from green to red when there is an active connection (you have already remoted into your office). Click on the red icon next to your asset then select “Add New Connection”



After the new connection is established, Use the monitor view screen to select which monitor you want to view in each connection. (IE. Connection window #1, select your left monitor, connection window #2, your right monitor)